

# XV2-21X Wi-Fi 6 Access Point

802.11ax Dual-Radio Indoor Access Point

## QUICK LOOK:

- Dual Radio Wi-Fi 6
- 5 GHz (2x2), 2.4 GHz (2x2)
- 1 GbE RJ45 interface
- Managed by cnMaestro™, Swift
- Limited lifetime warranty



Back panel with mounting bracket

### Value-Tier Wi-Fi for any market

Cambium Networks XV2-21X Wi-Fi 6 Indoor access point delivers a high-performance to price ratio attractive to any market.

The XV2-21X can be adopted and managed by any of the Cambium Networks management systems, cnMaestro™ Cloud, cnMaestro™ X, cnMaestro™ on-premises, or Swift app-based management. Choose the management type you need, and change it at any time. Unlike other value-tier access points, the XV2-21X is never locked into just one management selection.

### Designed for fast installation

The XV2-21X offers multiple installation methods included in the same shipping box. Mount the AP to a ceiling tile using the included steel plate, mount to an existing junction box with 83mm center-to-center holes, twist lock the AP onto a 36mm, 24mm and 14mm T-bar, or simply mount it to any flat surface using the included wall anchors. No accessory brackets are needed.

## XV2-21X Wi-Fi 6 Access Point

### Access Point Specifications

*Note: Some features will be included on subsequent firmware releases.*

**FCC** Ch 1–11, 36–48, 100–144, 149–165

**ISED** Ch 1–11, 36–48, 100–116, 149–165

**ETSI** Ch 1–13, 36–64, 100–140

**ROW** *Individual country limits may apply. Please contact sales for country specific regulations.*

**Note:** FCC, IC, EU DFS channels not supported in first release

**Radios** **5 GHz** 802.11 a/n/ac Wave 2/ax, 2x2:2  
**2.4 GHz** 802.11 b/g/n/ax, 2x2:2

**Wi-Fi** 802.11 a/b/g/n/ac Wave 2/ax

**SSID Security** WPA3-SAE, WPA3-Enterprise, WPA2 (CCMP, AES, 802.11i), WPA2 Enterprise (802.1x/EAP), WEP, Open

**Max PHY Rate** **5 GHz radio** 2402 Mbps  
**2.4 GHz radio** 573.5Mbps

**Ports** 1 x IEEE 10/100/1000 Mbps

**Antenna** **5 GHz** 6 dBi  
**2.4 GHz** 5 dBi

**Max EIRP** **5 GHz** 33 dBm  
**2.4 GHz** 32 dBm

**Power** Typical 11W, 802.3af powered device

**Dimensions** 155 mm x 155 mm x 37 mm  
(6.1 in x 6.1 in x 1.46 in)

**With Bracket:**

155 x 155 x 46 mm  
(6.1 x 6.1 x 1.81 in)

**Weight** 475g (1.05 lbs)

**LEDs** Multi-color status LEDs, dimmable, on/off

**Ambient Operation Temperature** 0°C to 50°C (32°F to 122°F)

**Storage Temperature** -40°C to 70°C (-40°F to 158°F)

**Humidity** 95% RH non-condensing

**MTBF** 1,980,244 hours at 50°C ambient (estimated)

**Mount Options** Wall or ceiling, T-bar with included locking bracket, ceiling tile plate

**Certifications (Compliance)** Passpoint 3.0,  
802.11 a/b/e/g/i/k/n/r/u/v/w/ac/ax, PP2.0  
FCC, IC, ETSI, CE, EN 60601-1-2, IEC60950,  
IEC62368, UL2043, EN 61373

## XV2-21X Wi-Fi 6 Access Point

### Network Specifications

*Note: Some features will be included on subsequent firmware releases.*

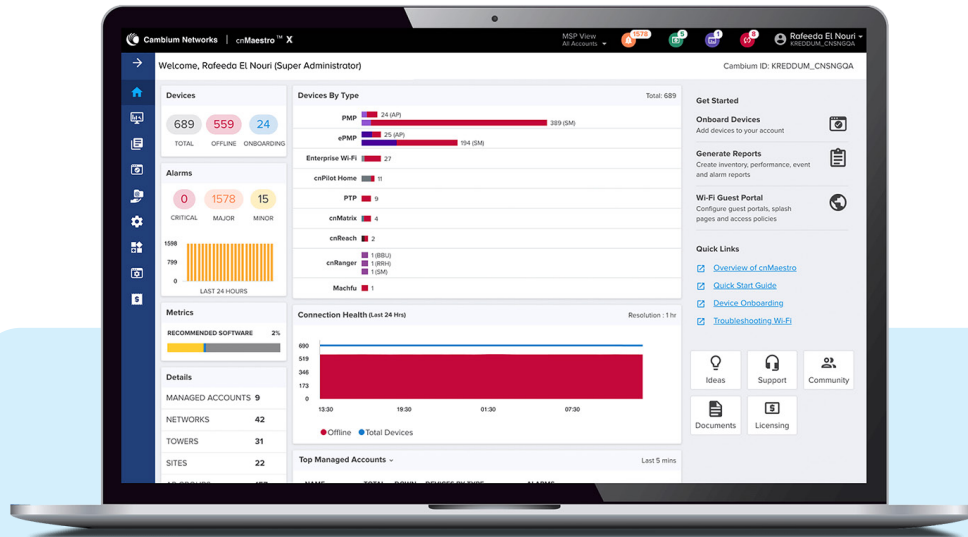
<b>Operational Modes</b>	Controller-less standalone Cloud-managed cnMaestro, VM	<b>RF Management</b>	Multi-Modal RF optimization supporting AutoRF (cnMaestro) performed in the intelligent edge AP. Out of band RF spectrum analysis, RF monitor with chn/noise/interference
<b>WLAN</b>	16 WLAN profiles per radio 128 clients per radio, 16 SSIDs, WPA-TKIP, WPA2 AES, 802.1x 802.11w PMF	<b>Network</b>	TCP connection log, NAT logging firewall, DHCP server, L2, L3 or DNS based access control, VLAN Pooling, RADIUS attribute VID VLAN per SSID per user
<b>Guest Access/Captive Portal</b>	cnMaestro, On-AP hosted guest portal Social login, Voucher based login, SMS gateway, Payment gateway support. Supports radius based authentication. cnMaestro API support for external captive portal integration.	<b>Band Steer Load Balance</b>	Yes
<b>Authentication Encryption</b>	Hotspot 2.0, 802.1x EAP-SIM/AKA, EAP-PEAP, EAP-TTLS, EAP-TLS, MAC Authentication local database or RADIUS	<b>Tunnel</b>	L2TPv2, L2GRE, PPPoE
<b>Scheduled WLAN</b>	On/off by day, week, time of day	<b>Network Tools</b>	Wired and wireless remote packet capture, logging, ZapD
<b>Data Limit</b>	Client bitrate/time/throughput limit per SSID	<b>Network and RF Management Tools</b>	Wired and wireless remote packet capture, ZapD performance tool, rogue AP detection
<b>Subscriber QoS</b>	WMM	<b>Services</b>	L2-L7 application visibility & control, WiFi Calling control, WIDs/WIPs, NTP, Syslog, SNMP traps, DNS proxy, auto-off on WAN failure
<b>Fast Roaming</b>	802.11r, OKC, cnMaestro assisted roam	<b>API</b>	RESTful management and statistics API Presence location APIs
<b>Mesh</b>	Multi-hop, either band	<b>IP</b>	IPv4, IPv6
<b>Channel Selection</b>	Multi-modal channel selection with AutoChannel and autotune (cnMaestro)		

### Standards

<b>Wi-Fi Protocols</b>	VHT MCS rates, 16/64/256/1024-QAM, 20/40/80/160 MHz
<b>Wi-Fi Protocols</b>	TWT, Long OFDM Symbol, Transmit beamforming, Airtime Fairness, AMSDU, AMPDU, RIFS, STBC, LDPC, MIMO Power Save, MRC, BPSK, QPSK, CCK, DSSS, OFDM, OFDMA, UL/DL MU-MIMO
<b>Wi-Fi Protocols</b>	IEEE 802.11 a/ac/ax/b/d/e/g/h/i/k/n/r/u/v

## XV2-21X Wi-Fi 6 Access Point

## Management



To serve a growing market for advanced management and services functionality, Cambium Networks offers cnMaestro™ in two different management tiers:

### cnMaestro Essentials

License-free management that delivers a disruptive Total Cost of Ownership (TCO) for organizations of all sizes.

### cnMaestro X

Paid subscription that includes:

- Advanced device management capabilities.
- Cambium Care Pro for 24x7 technical support.
- Accelerated access to L2 engineers and regular software updates.
- Upgrades for advanced features.

**For More information, please visit:**

[cambiumnetworks.com/products/software/cnmaestro-essentials](https://cambiumnetworks.com/products/software/cnmaestro-essentials)

[cambiumnetworks.com/products/advanced-services/cnmaestro-x](https://cambiumnetworks.com/products/advanced-services/cnmaestro-x)

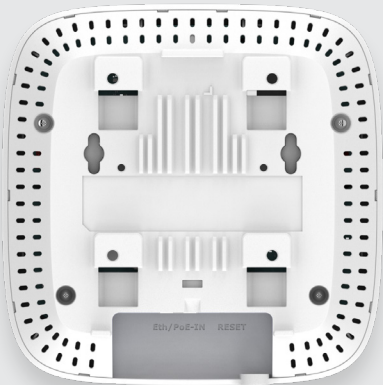
### XV2-21X Wi-Fi 6 Access Point



Front Panel



Front Oblique



Back Panel



Bottom / Ports



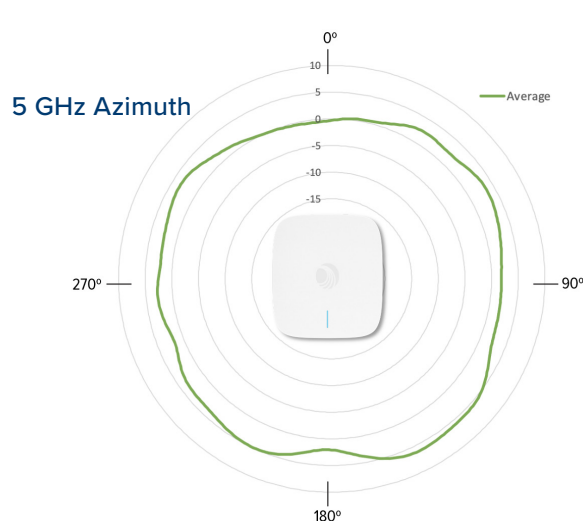
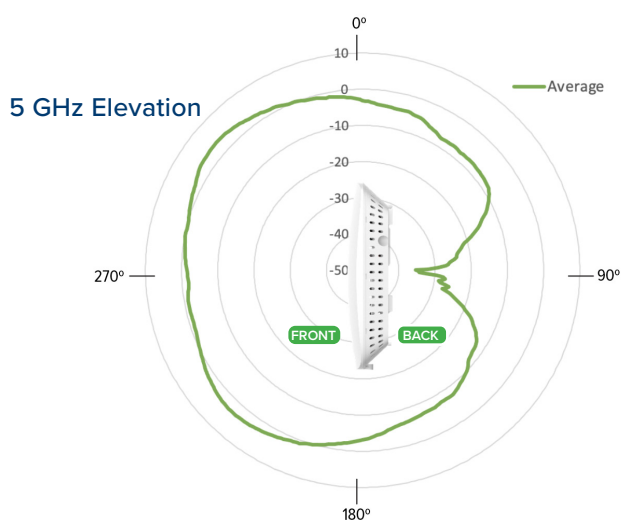
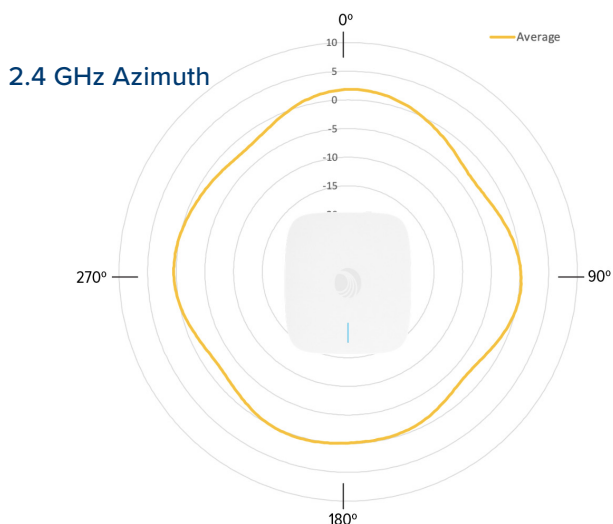
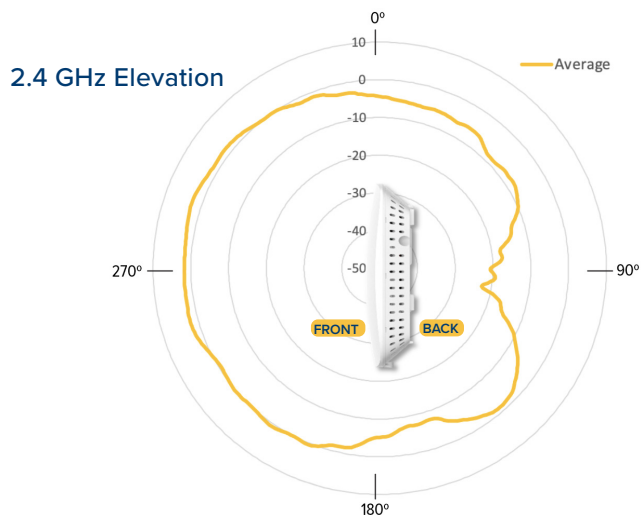
Front Panel with Mounting Bracket



Back Panel with Mounting Bracket

## XV2-21X Wi-Fi 6 Access Point

### Antenna Patterns



#### 2.4 GHz Receive Sensitivity (dBm) Per Chain

HT20		HT40	
MCS0	-95.5	MCS0	-93
MCS7	-76.5	MCS7	-74
HE20		HE40	
MCS0	-95.5	MCS0	-92.5
MCS7	-76.5	MCS7	-73.5

#### 2.4 GHz TX Power Target

Rate	Pout (dBm)
MCS0 HT20	27
MCS7 HT20	25
MCS8 VHT20	25
MCS9 VHT40	24
MCS11 HE40	23

#### 5 GHz Receive Sensitivity (dBm) Per Chain

VHT20	VHT40	VHT80	VHT160
MCS0	-95.5	MCS0	-94
MCS7	-77	MCS7	-74
MCS0	-90	MCS0	-87.5
MCS7	-71.5	MCS7	-69
HE20	HE40	HE80	HE160
MCS0	-95.5	MCS0	-93.5
MCS7	-76.5	MCS7	-74
MCS0	-90.5	MCS0	-87.5
MCS8	-65	MCS8	-65
MCS11	-57	MCS11	-57

#### 5 GHz TX Power Target

Rate	Pout (dBm)
MCS0 VHT20	27
MCS7 VHT20	24
MCS0 VHT40, VHT80	27, 27
MCS7 VHT40, VHT80	24, 24
MCS11, HE20, HE40, HE80, HE160	22, 22, 22, 21

## XV2-21X Wi-Fi 6 Access Point

### Cambium Ordering Information

**Regulatory Model** XV2-21X

**XV2-21X0A00-US** XV2-21X Indoor Dual radio WiFi 6 AP, 2x2, GbE, US

**XV2-21X0A00-EU** XV2-21X Indoor Dual radio WiFi 6 AP, 2x2, GbE, EU

**XV2-21X0A00-RW** XV2-21X Indoor Dual radio WiFi 6 AP, 2x2, GbE, RW

**XV2-21X0A00-CA** XV2-21X Indoor Dual radio WiFi 6 AP, 2x2, GbE, CA

**N000000L142A** N000000L142A PoE injector, 60W, 5 GbE, Indoor, Energy Level 6 Supply

**N000000L034B** PoE, 30.5W, 56V, GbE DC Injector, Indoor, Energy Level 6 Supply, accepts C5 connector

**N000900L017A** PoE, 15.4W, 56V, GbE DC Injector, Indoor, Energy Level 6 Supply, accepts C5 connector

**XA-DROPTILE15** Recessed ceiling tile Installation Kit for 15mm T-bar, 20mm drop extension. 5 Pack

**XA-DROPTILE24** Recessed ceiling tile Installation Kit for 24mm T-bar, 20mm drop extension. 5 Pack

**AX-E510RBKT-WW** Shock mount bracket

### cnMaestro X Ordering Information

**MSX-SUB-XV2-21X-1** cnMaestro X for one XV2-21X AP. Creates one Device Tier 3 slot. Includes Cambium Care Pro support. 1-year subscription

**MSX-SUB-XV2-21X-3** cnMaestro X for one XV2-21X AP. Creates one Device Tier 3 slot. Includes Cambium Care Pro support. 3-year subscription

**MSX-SUB-XV2-21X-5** cnMaestro X for one XV2-21X AP. Creates one Device Tier 3 slot. Includes Cambium Care Pro support. 5-year subscription

## XV2-21X Wi-Fi 6 Access Point

### Cambium Care Ordering Information

<b>CCADV-SUP-XV2-21X-1</b>	Cambium Care Advanced, 1-year support for one XV2-21X Wi-Fi 6/6E AP. 24x7 TAC support, SW updates, and NBD advance replacement for HW
<b>CCADV-SUP-XV2-21X-3</b>	Cambium Care Advanced, 1-year support for one XV2-21X Wi-Fi 6/6E AP. 24x7 TAC support, SW updates, and NBD advance replacement for HW
<b>CCADV-SUP-XV2-21X-5</b>	Cambium Care Advanced, 3-year support for one XV2-21X Wi-Fi 6/6E AP. 24x7 TAC support, SW updates, and NBD advance replacement for HW
<b>CCPRO-SUP-XV2-21X-1</b>	Cambium Care Pro, 1-year support for one XV2-21X Wi-Fi 6/6E AP. 24x7 TAC support and SW updates
<b>CCPRO-SUP-XV2-21X-3</b>	Cambium Care Pro, 3-year support for one XV2-21X Wi-Fi 6/6E AP. 24x7 TAC support and SW updates
<b>CCPRO-SUP-XV2-21X-5</b>	Cambium Care Pro, 5-year support for one XV2-21X Wi-Fi 6/6E AP. 24x7 TAC support and SW updates
<b>CCADV-UPG-XV2-21X-1</b>	Cambium Care Advanced Add-on to cnMaestro X, 1-year support for one XV2-21X. 24x7 TAC support, SW updates, and NBDS advance replacement for HW
<b>CCADV-UPG-XV2-21X-3</b>	Cambium Care Advanced Add-on to cnMaestro X, 3-year support for one XV2-21X. 24x7 TAC support, SW updates, and NBDS advance replacement for HW
<b>CCADV-UPG-XV2-21X-5</b>	Cambium Care Advanced Add-on to cnMaestro X, 5-year support for one XV2-21X. 24x7 TAC support, SW updates, and NBDS advance replacement for HW

### LIMITED WARRANTY

Cambium Networks XV2-21X Wi-Fi 6 Access Point includes a limited hardware warranty for a period of 5 years after end of sale.

#### ABOUT CAMBIUM NETWORKS

Cambium Networks empowers millions of people with wireless connectivity worldwide. Its wireless portfolio is used by commercial and government network operators as well as broadband service providers to connect people, places and things. With a single network architecture spanning fixed wireless and Wi-Fi, Cambium Networks enables operators to achieve maximum performance with minimal spectrum. End-to-end cloud management transforms networks into dynamic environments that evolve to meet changing needs with minimal physical human intervention. Cambium Networks empowers a growing ecosystem of partners who design and deliver gigabit wireless solutions that just work.

[cambiumnetworks.com](http://cambiumnetworks.com)

10252022