



# Solving for safer everywhere

Protecting people, property and places.



**MOTOROLA SOLUTIONS**



# Motorola Solutions is solving for safer

## How we do it

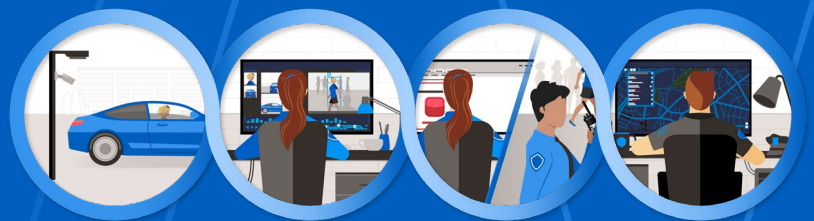
Today, we make critical communications devices and networks that perform exceptionally in the harshest conditions and are proven to help teams stay connected and communicate with clarity. We design video security systems powered by responsibly-built artificial intelligence (AI) analytics that can alert people when action is needed, focusing human attention to cover more ground and act with more certainty. We bring voice, video and data feeds into the operations center, connecting the dots to simplify workflows and help provide the overarching perspective to make decisions with greater focus, accuracy and speed. And, because partnership is tantamount to success, we provide managed and support services with an 'always-on' rigor to keep your technology secure, optimized and current with innovative advancements for confident operational performance.

## The power of the technology ecosystem

With safety and security at its core, our technology ecosystem is a powerful collection of voice, video and data that provides immediate situational awareness, coordinated collaboration and improved performance. Critical information is seamlessly delivered to individuals exactly when and how they need it. This creates a sense of trust and safety that allows communities and organizations to thrive. Grounded in almost 100 years of close customer and community collaboration, our ecosystem is built to evolve and scale effortlessly.

**We build and connect technologies to help protect people, property and places – connecting those in need to those who can help. Our solutions enable the collaboration between public safety agencies and enterprises that is critical for a proactive approach to safety and security. Because when people can work together in more powerful ways, we can help solve for safer schools, safer hospitals, safer organizations, safer communities – safer everywhere.**

### Motorola Solutions Safety & Security Ecosystem



Our technology ecosystem allows you to address everyday concerns as well as emerging situations through four pillars — Detect, Analyze, Communicate and Respond. We will explore how these pillars work together to address your security challenges through the example of an unwanted individual on your property.



Perimeter alert

# Detect

Overseeing the widespread and diverse areas and sensors of your facility can be a challenge. From controlling multiple points of entry, proactively detecting visible firearms, monitoring employee safety and securing key areas, detection plays a critical role in improving situational awareness and decreasing response times to potential issues and operational problems.

Integrated video security uses AI to create high visibility across your diverse facility all in one view. Access control provides entry management, immediate lockdown capabilities and push notifications to devices. Powerful video software detects visible firearms, allowing for verification and action within seconds. All personnel across multiple teams are automatically informed of critical information simultaneously on their appropriate device.

All of this comes together to provide you with better insights — so you always know what is happening across your facility.



## Detection solutions

### Secure sensitive areas of your facility

Monitor and secure restricted areas using access control and video analytics technologies. Receive instant notifications via text message and text-to-voice alerts on radios, smartphones or any device of choice of an access point breach.

### Maintain proactive awareness for suspicious activity

Enhance visibility across vast areas like parking lots and corridors using our wide-view cameras combined with video analytics technology allowing for a holistic view for any unusual movement such as vehicles driving the wrong direction or loitering.

### Be alerted on who is coming in and out of your facility

Monitor points of entry to your facility using License Plate Recognition analytics and Watch List Alerting. Whether a banned individual enters your parking lot or an expected delivery has arrived on your property, automatically notify all relevant staff to engage the appropriate response plan. Expand on the power of video security analytics by including image analysis technology.

### Get visibility into escalating situations

Protect your staff members and guests from interactions with disruptive individuals and situations. Body-worn cameras automatically begin capturing footage of escalated situations when the duress button on radios is pressed. Alerts are then sent to appropriate staff directly on their radios and in the operations center when body-worn cameras are activated. Video software connects detection-type analytics with human verification to reveal the presence of firearms and proactively preempt a potentially tragic situation.



## Perimeter Alert

# Detect



## License plate recognition

A known and unwanted license plate is detected entering facility grounds using license plate recognition and an alert is sent directly to the appropriate individuals.



## Featured technology

### Video security & analytics

Deter threats and enhance visibility across your facilities with specialized cameras for every situation and location – such as body-worn cameras for personnel safety, fisheye cameras for secure areas, multi-sensor cameras for corridors and pan-tilt-zoom cameras for parking lots and ballrooms. Ensure situational awareness is always maintained by sending instant notifications of these analytics to the appropriate individuals on the device of their choice from radios to smartphones and more.

### Access control

Manage access to different buildings or restricted areas within your facilities using a role-based system with instant detection of individuals at access points and camera-based verifications.

### Visible firearm detection

Enable rapid human-based confirmation of an active-shooter threat as it detects handheld firearms through AI and sends automatic alerts to security operators to verify.



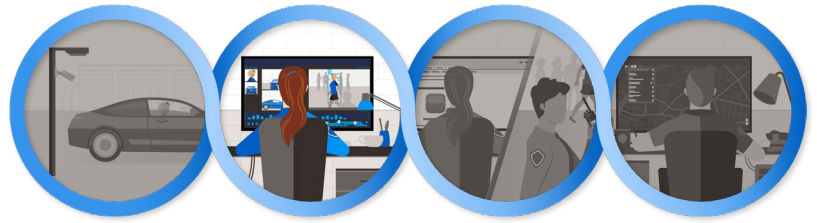
Perimeter alert

# Analyze

You're responsible for monitoring extensive facilities filled with workers, secure areas, vast spaces, critical materials and equipment. Identifying unwanted individuals, tracking persons of interest, locating missing inventory and recognizing hazardous situations across these environments is a demanding task.

Appearance Search capabilities quickly and seamlessly explore video footage to identify persons or vehicles of interest across the plant floor or parking lot. Powerful video analytics detect potentially suspicious or hazardous activity, providing real-time insights into facility-wide movements. The Focus of Attention interface quickly brings your attention to areas of video security interest, increasing efficiency and improving response time when evaluating a situation.

Ultimately, these solutions and insights are crucial to cutting through the noise, proactively locating points of interest and recognizing which events are important – so you can have eyes on the scene to evaluate and make an informed decision to take action.



## Analytic solutions

### Track and locate persons of interest in real time

Pin-point the location of specific individuals within your property to respond to or prevent potential incidents. Using video analytics, security teams can respond quicker to a reported individual of interest by using their appearance, shoes or clothing as an identifying characteristic to begin an area search. Prevent potential escalations by automatically populating relevant cameras if an intruder is identified on your facility and monitor their path of trajectory.

### Actively monitor the location of response resources

Determine your closest resources to an incident for the most efficient and timely response by leveraging the mapping of the real-time GPS location of devices. This information enables your staff to increase their efficiency and promptly respond to any situation at hand with greater confidence.

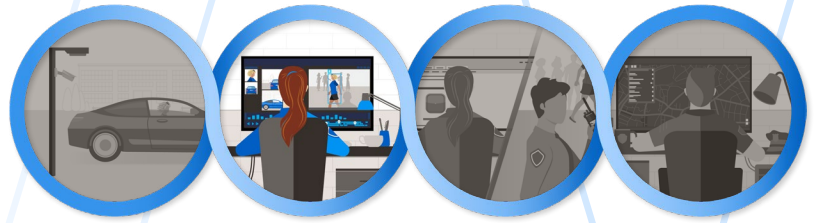
### Quickly evaluate a situation on a single view

Save seconds and have the full story by populating all nearby cameras to an incident with a single click and view all available intelligence aggregated onto a single screen.



Perimeter Alert

# Analyze



## Known individual located

Nearby cameras are populated and security teams monitor the movement of the banned individual. Nearest security resources are located.



## Featured technology

### Appearance search

Find who you are looking for faster with video search that can be initiated by selecting specific physical descriptions such as hair or clothing color, gender and age category or vehicle type and color.

### CommandCentral Aware

Provide critical incident insights and eyes-on-the-scene with real-time video, resource GPS location information, streamlined incident intelligence and direct communication connections within your facility and with response teams.

### Self-learning video analytics

Leverage the power of video analytics and define rules to receive real-time notifications to monitor your facilities and property, thereby enabling immediate response and providing peace of mind that your operations are covered 24/7.





Perimeter alert

# Communicate

Whether you are an operations coordinator on-site needing to routinely communicate with your staff, management and other areas of your facility, or a response team dealing with a large-scale emergency, clear and timely communication is key to keeping your teams connected and informed.

Radio communications instantly and reliably connects security, response teams, staff members, management and local first responders when needed. Broadband push-to-talk with multimedia capabilities extend your reach by enabling voice and data information to be shared across devices to those in other buildings or off-site. Intuitive dispatch consoles make it easy to notify and share information with your entire organization at a moment's notice.

Connectivity — across devices, networks and locations — is an important part of ensuring you and your entire team are aware and informed at all times.



## Communication solutions

### Instantly share information across multiple teams or facilities

Distribute intelligence across multiple devices and facilities for seamless communication no matter where your staff is located. Images of unfolding incidents can be shared with a press of a button for an efficient response from your security teams and operations to prevent the escalation of a situation.

### Broadcast mass notification alerts to relevant staff

Notify and enable your staff at a moment's notice with automated alerts sent via text, email or voice message from laptops or smartphones. Send images and relevant multimedia across multiple groups and teams to provide your staff with the most up-to-date information.

### Manage and access all communications from a single view

Simplify and standardize your dispatch process with streamlined dashboard views and instant communication across multiple devices from a single desktop application.

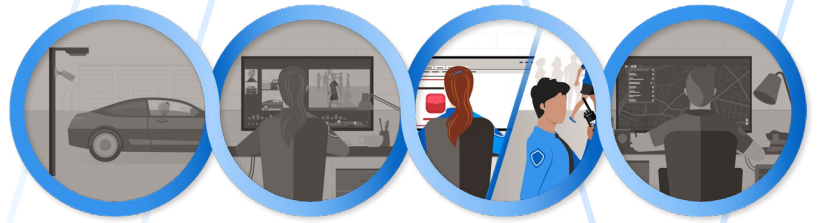
### Transmit multi-media intelligence

Live video and intelligence can be shared with security staff monitoring building entrances to intercept individuals and prevent them from entering the facility. Share images of disruptive or unwanted individuals across your staff and security teams to ensure a seamless share of relevant information over a privately owned broadband network.



Perimeter Alert

# Communicate



## Notification communicated

Nearest security resources are dispatched with location and images of the unwelcome individual.



## Featured technology

### MOTOTRBO radios

MOTOTRBO Ion brings together renowned PTT performance, an open app ecosystem on the Android platform and access to the Motorola Solutions technology ecosystem — including video security and analytics, and best-in-class network security. With Ion, teams stay connected across networks and devices. Business-critical data and workflows are unified and simplified. And the capabilities your workforce needs to be at their best are always on. An intuitive touchscreen lets you view high resolution images and an integrated camera lets you send — and stream — photos and videos.

### WAVE PTX/TLK

Share voice and data without boundaries, enabling smart phones with push-to-talk capabilities enhanced with the ability to push details via text, photo, video or file attachment to smartphones, tablets, laptops and land-lines.

### Rave Mobile Safety

Support emergency coordination efforts by communicating operational updates and alerts so security teams and individuals are better informed to take appropriate action.





Perimeter alert

# Respond

Whether it's an everyday incident or an emergency situation, your response teams and facility personnel need to communicate with each other to coordinate a response in the most efficient way possible. Being ready and aware is critical to ensuring your team can quickly respond to incidents or problems before they escalate — decreasing downtime, maintaining productivity and ensuring the health and safety of individuals.

Connected devices like body-worn cameras enable a smarter response to situations and better protection for your security staff. These cameras deliver a powerful mix of capabilities, from live streaming for instant response to automated recording through Bluetooth sensors and beacons. Dynamic interoperability makes it easy to directly share data with response team personnel in real-time, enhancing situational awareness. Incident management capabilities streamline the logging of incident reports and make it easy to share multimedia with other personnel when needed and inform future decision-making for safety, security and operational procedures. Work order ticket management makes it easy to track work orders and close out tickets quickly and efficiently directly from your radio.

Because enabling rapid response and documenting past incidents can be the key to preventing incidents from becoming tragedies.



## Response solutions

### Dynamically communication with public safety

Optimize response times to situations and incidents that require additional emergency response resources. Proactively engage with public safety using radio networks to share situational and location intelligence updates before their arrival on scene. Compile and deliver video footage to law enforcement teams for future incident prevention.

### Provide critical incident insights

Provide critical incident insights and eyes-on-the-scene with real-time video from your operations center to staff in the field as well as from your staff back to the operations center. Updates are communicated with relevant staff and teams on their devices of choice to ensure the safety of your teams while they respond to everyday incidents and emergency situations.

### Document incidents for future prevention

Save time with automatic population of incident data for efficient reporting and documentation. All relevant information and video captured is securely and seamlessly stored and documented and can be shared with security teams, administration or public safety.

### Increase workforce efficiency

Achieve a seamless flow of communication and information across teams with two-way radio communications. Whether security needs to respond to a theft, or a guest requires additional amenities — equipping your staff with the appropriate tools for an efficient response is critical.



Perimeter Alert

# Respond



## First response dispatched & incident documented

Security teams approach the intruder wearing body-worn cameras and local police are engaged. Incident logged with pre-populated fields and relevant data.



## Featured technology

### Body cameras

Equip your personnel so they're in control of every situation – no matter how, or where they work. Our body-worn cameras provide a comprehensive video solution that deters aggression, protects the wearer and captures high quality video evidence.

### Critical Connect

Easily enable and disable dynamic, seamless and secure temporary communication links between networks with interoperability between response teams and on-site staff, as well as with local first responders.

### Ally

Streamline end-to-end incident and records management with customizable record fields and multimedia attachments, all accessible from web-enabled devices.



# Automate your technology with Orchestrate

Orchestrate is a simple, user-friendly and cloud-based interface tool that gives administrators the ability to configure and automate workflows that control their technology ecosystem. These intelligent, automated workflows also enhance efficiency as well as improve response times, effectiveness and overall personnel safety. Orchestrate equips your security network operations teams with the capabilities they need to detect triggers across a number of installed devices and quickly take actions to reduce risk of breaches and downtime by automatically alerting the appropriate teams and executing the proper procedure. Orchestrate makes managing your day-to-day operations effortless by providing a self-service workflow management tool at your fingertips.

## Services help maximize your technology investment

Effectively managing a complex ecosystem can be complicated. You need the right service, support and management to ensure your day-to-day needs are taken care of – ensuring smooth operations. Our managed and support services provide a proven, 'always-on' rigor to keep your technology secure, optimized and current with innovative advancements, for confident operational performance. From device break-fix support to comprehensive 24/7 management to cybersecurity detection and defense, our team brings decades of experience to help ensure your ecosystem of technologies supports confident operational performance.

Learn more at:  
[motorolasolutions.com/safetecosystem](https://motorolasolutions.com/safetecosystem)



Motorola Solutions, Inc. 500 West Monroe Street, Chicago, IL 60661 U.S.A. [motorolasolutions.com](https://motorolasolutions.com)

MOTOROLA, MOTO, MOTOROLA SOLUTIONS and the Stylized M Logo are trademarks or registered trademarks of Motorola Trademark Holdings, LLC and are used under license. All other trademarks are the property of their respective owners. © 2023 Motorola Solutions, Inc. All rights reserved. 11-2023 [BG07]

## Solving for safer

Motorola Solutions is transforming the way we approach safety and security with our powerful ecosystem that brings together voice, video and data. By leveraging these technologies, our ecosystem can provide immediate situational awareness, enabling coordinated collaboration and automated workflows from the onset of an event to its successful resolution. The ecosystem seamlessly connects people, delivers critical information where it's needed, and builds a sense of safety and trust that allows communities and organizations to thrive. With a commitment to continued evolution and scalability, our technology ecosystem is solving the challenges of safety and security, making the world a safer place for all.