



# COMPREHENSIVE PUBLIC SAFETY LTE PORTFOLIO

REAL TIME INFORMATION EVERY SECOND OF EVERY DAY



# TABLE OF CONTENTS

---

**03** INTRODUCTION

**04** ALLIANCES

**05** APPLICATIONS

**08** APPLICATION PARTNERS

**10** BROADBAND

**13** DEVICES

**16** SECURITY

**19** SERVICES

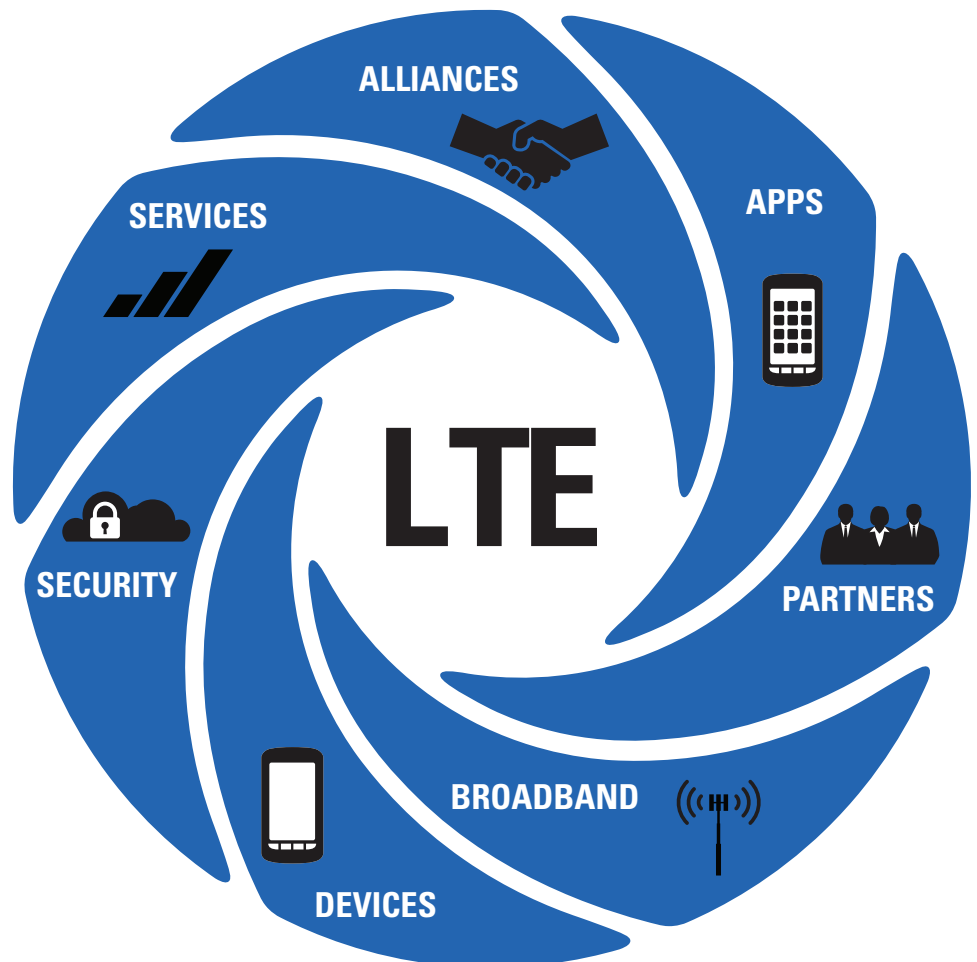
**20** CONCLUSION

# APPLICATIONS, DEVICES, NETWORKS AND SERVICES FOR MISSION CRITICAL OPERATIONS

Providing new levels of safety and efficiency to enable better decisions is more than better equipment, it's about delivering new ways to connect people to information and to each other.

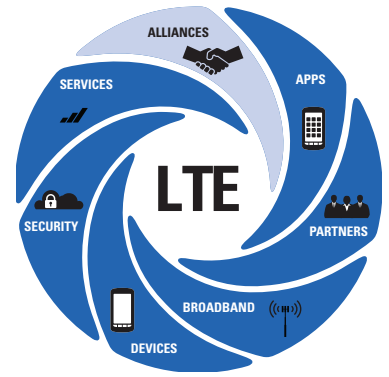
To get the most out of a world that offers richer real-time information, you need a complete ecosystem that encompasses Long Term Evolution (LTE) networks, smart applications, purpose-built, intuitive devices and comprehensive services.

Count on our Public Safety LTE solutions to deliver anywhere, anytime access to multimedia information with the priority, resiliency and security you demand.





# ALLIANCES



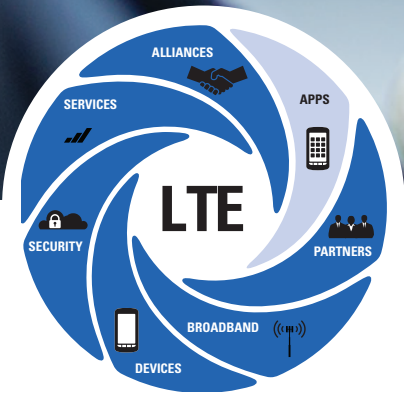
**ERICSSON**

## **FIELD-PROVEN LTE WITH SUPERIOR PERFORMANCE BRINGING THE STRENGTH AND EXPERIENCE OF THE GLOBAL COMMERCIAL CARRIER MARKET TO PUBLIC SAFETY**

Motorola has teamed up with Ericsson, the world's leading provider of technology and services to telecom operators, to deliver LTE technology leadership and market scale advantage to public safety. The undisputed leader in LTE development and standardization, Ericsson offers field-proven stability, throughput, and latency – key factors for Public Safety LTE end users. Ericsson will provide standards-based products for LTE access and packet core networks, along with related services, and ensure that the LTE mobile broadband technology meets the mission-critical demands of Motorola Next Generation Public Safety solutions.





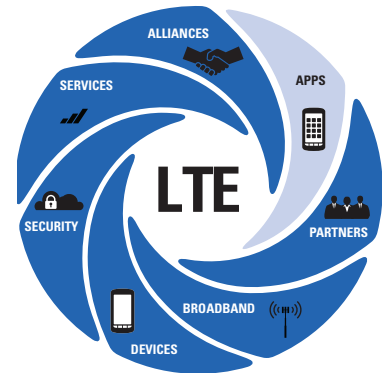


# PUBLIC SAFETY LTE APPLICATIONS

## MAKE FASTER, SMARTER DECISIONS

Quickly download the latest apps and add new capabilities to your devices. Apps from Motorola Solutions and our extensive portfolio of partners, give you the tools you need most to access, capture and disseminate information - right at your fingertips.

# PUBLIC SAFETY LTE APPLICATIONS



COMMUNICATIONS

DISPATCH

INTELLIGENCE

## COMMUNICATIONS

### PSX - PUBLIC SAFETY EXPERIENCE

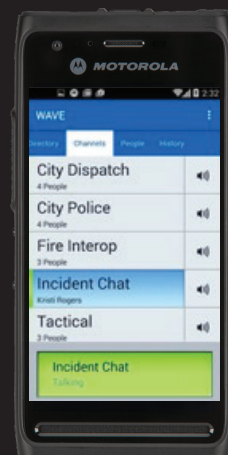
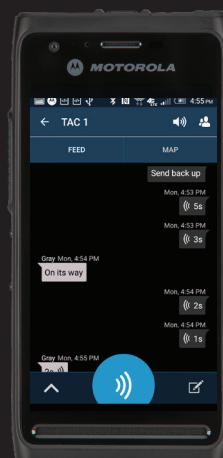
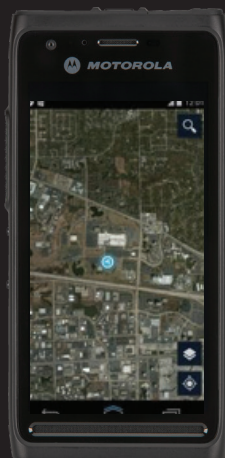
An intuitive interface puts safety above everything else by adapting to users, tasks and environments. PSX aggregates and prioritizes information so you clearly and concisely see what is relevant based on your status and activity, improving efficiency, eliminating error and creating more opportunities to collaborate and share information.

### WAVE MOBILE COMMUNICATOR

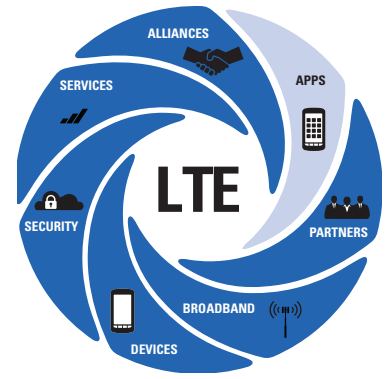
Transform smartphones, tablets and PCs into team communication tools and integrate with land mobile radio (LMR) to provide unified voice, text messaging and presence in a single, easy-to-use application. WAVE™ turns your Android™ device into a multi-channel push-to-talk (PTT) over broadband handset for fully secure, real-time voice communications anywhere you have a network connection.

PSX

WAVE







# DISPATCH

## PREMIERONE HANDHELD

Stay connected to mission-critical data on your Android smartphone or tablet with PremierOne™ Handheld. Receive incidents and situational updates, quickly and securely access details about people and property, attach photos to incidents and collaborate with others; no matter where you are and without calling dispatch for assistance.

## PREMIERONE MOBILE

Keep your resources out on the street protecting the community with a full mobile office in their vehicles. PremierOne Mobile transforms the work environment so personnel can monitor, create and dispatch incidents, see the status and location of other units, query databases, view video and photos, create reports, and collaborate across multiple jurisdictions.

# INTELLIGENCE

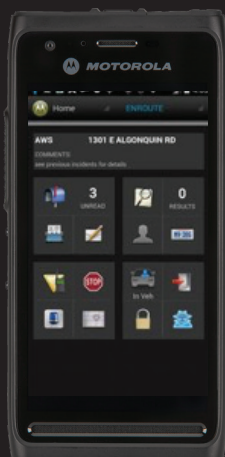
## COMMANDCENTRAL INFORM

Make faster, data driven decisions in the field with layered, geospatial intelligence in the palm of your hand from CommandCentral Inform. Intuitively visualize intelligence from anywhere on an internet enabled smartphone, tablet or computer and access critical resource and event details in real time. Collaborate with tactical whiteboarding right on the map and communicate with integrated WAVE functionality over push-to-talk over IP.

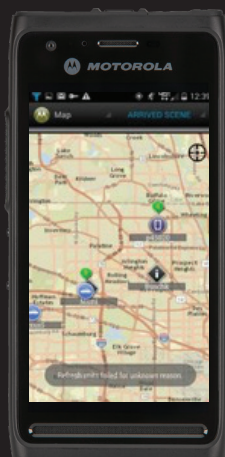
## COMMANDCENTRAL PREDICTIVE

Proactively patrol your beat with intelligent, targeted area crime predictions from CommandCentral Predictive. Align officer activity to data driven strategic plans with prioritized threat areas, access granular prediction details including type, time frame and location and read previous incident information pulled directly from your computer aided dispatch (CAD) and records management systems (RMS).

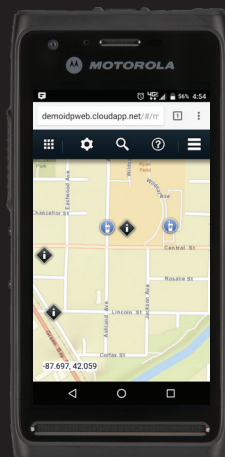
**PREMIERONE  
HANDHELD**



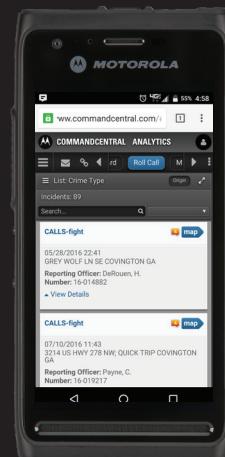
**PREMIERONE  
MOBILE**



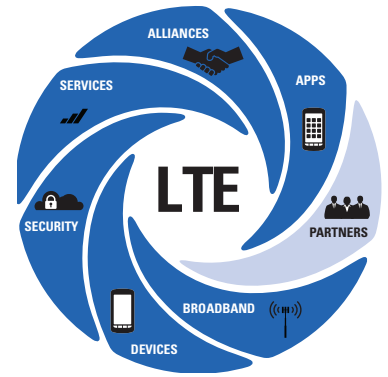
**COMMANDCENTRAL  
INFORM**



**COMMANDCENTRAL  
PREDICTIVE**



# APPLICATION PARTNERS



Our partnerships make it possible for public safety to interact more effectively with the community while information is collected and shared quickly among colleagues in the field, fusion centers, and across emergency management systems.



## **AccuWeather**

Provides forecasts, warnings, data and consulting services which will enable you to minimize risks and help protect your citizens, communities and public safety personnel in emergencies



## **Axis**

Provides IP-based network video solutions including network cameras (IP cameras) and video encoders for security surveillance and remote monitoring



## **Agent Vi**

Supplies advanced video analytics for real-time video analysis and alerts, and post-incident forensic video search, delivering on the true potential of surveillance networks



## **BlueForce Development**

Builds national security markets software that enable mobile teams to rapidly stand-up, manage, and tear-down secure networks of people, proximity, and body-worn sensors using wireless mobile devices



## **Amazon Web Services (AWS) Govcloud**

AWS GovCloud (US) is an isolated AWS region designed to host sensitive data and regulated workloads in the cloud, helping customers support their U.S. government compliance requirements



## **BriefCam**

Offers a powerful set of video review tools for locating events of interest rapidly and accurately, reaching targets more quickly than ever before



## **Anixter**

A leading global distributor of communications and security products, electrical and electronic wire, and cable



## **CryWolf**

A comprehensive false alarm management solution used by hundreds of agencies to reduce false alarms, increase fee and fine collections, and streamline false alarm administration



## **AtHoc**

A pioneer and recognized leader in networked crisis communication, protecting millions of people and thousands of organizations around the world



## **Deccan International**

Supplies decision-support software solutions to fire and EMS departments and agencies across the USA and Canada



## **DigitalStakeout**

Provides localized social media intelligence and alerts to public safety during real-world situations that affect the health, security or well being of communities they protect





### Drakontas

Allows mobile team operations to create and share information in real time via personnel tracking, messaging, digital forms, file sharing, collaborative whiteboards, and more



### Milestone

A global leader in open-platform IP video management software that is easy to manage, reliable, and provides flexible solutions



### Echosec

Easy-to-use location-based data monitoring solution that is trusted by governments and agencies around the world



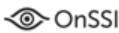
### Nice (NiceVision)

An international company, specializing in telephone voice recording, data security, and surveillance



### Genetec

A global provider of IP video surveillance, access control and license plate recognition solutions unified in a single platform



### OnSSI

Offers breakthrough Video Management Software technology that's field proven at tens of thousands of installations globally



### HipLink

Integrates with CAD for automatic alerts to smartphone apps or text to phones and pagers on any carrier or Wi-Fi



### Orion Communications

AgencyWeb® 'intelligent' workforce management solution, manages personnel data, scheduling, time and attendance, training and employee assets from one centralized location



### Intrado - Beware

Provides public safety personnel with critical information from thousands of commercial and public records about people, places and properties



### SceneDoc

Public safety's all-in-one mobile software for data collection and retrieval, saving agencies an hour of paperwork per shift on average, resulting in more time in the community



### Locution Systems, Inc.

PrimeAlert® fire station alerting system delivers voice alerting, visual alerting, lighting and sound systems, and automated bay doors for fire stations



### Wynyard Group

A market leader in crime fighting software with powerful advanced analytics in an easy-to-use tool to help customers prevent and solve serious crime



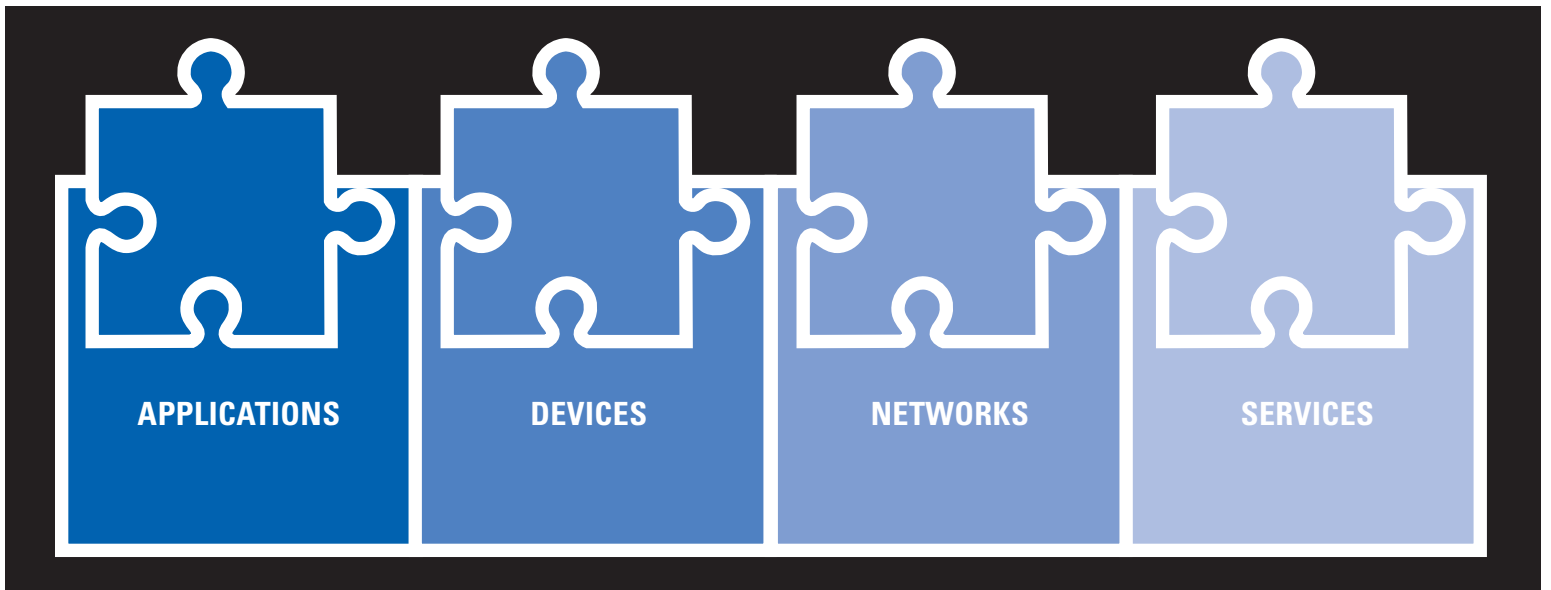
### Medallion

A permit management solution that automates and simplifies the application and approval process for a wide variety of permits and licenses, and improves service fee collections

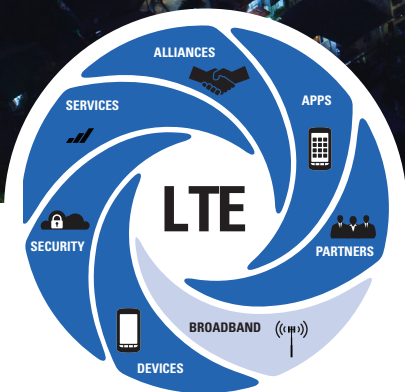


### ShotSpotter-SST

A global leader in gunfire detection and location technology solutions







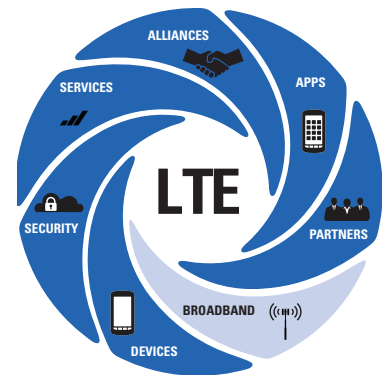
# PUBLIC SAFETY LTE BROADBAND

**TRANSFORM MISSION CRITICAL OPERATIONS WITH  
BROADBAND INNOVATION**

Count on our Public Safety LTE Broadband systems to deliver anywhere, anytime access to multimedia information with the priority, resiliency and security you demand.



# PUBLIC SAFETY LTE BROADBAND

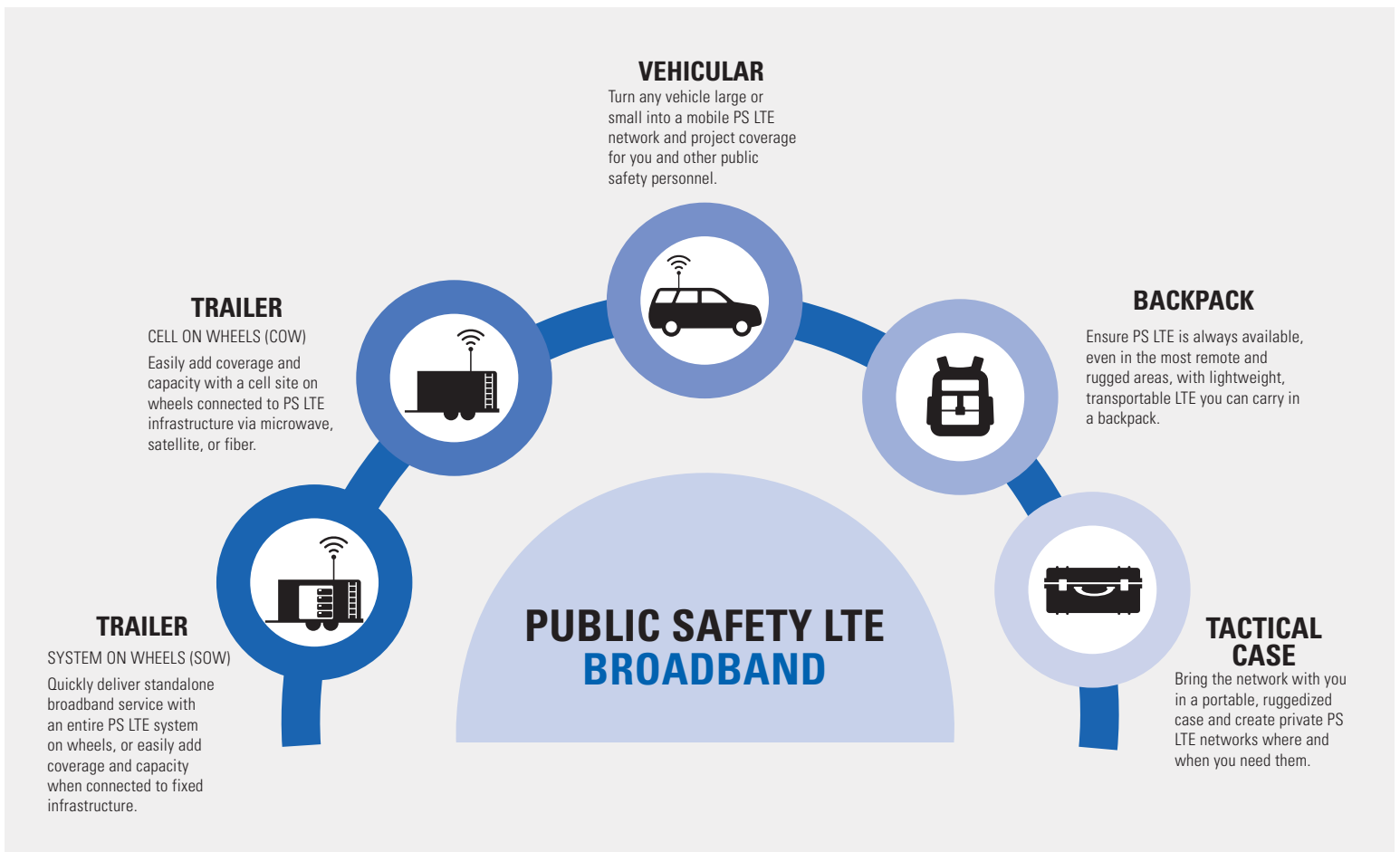


From enriched location applications, sensors and improved tactical collaboration to real-time high-definition video and accessing building plans on the run; PS LTE fixed and portable broadband networks are creating a new era of public safety innovation. With secure, high-speed access to new levels of information, your agency and your first responders will be better equipped to predict, prepare for and respond to situations. The added benefit to prioritize and preempt important information means you significantly advance your ability to work more efficiently while better safeguarding yourself, colleagues, and the public.

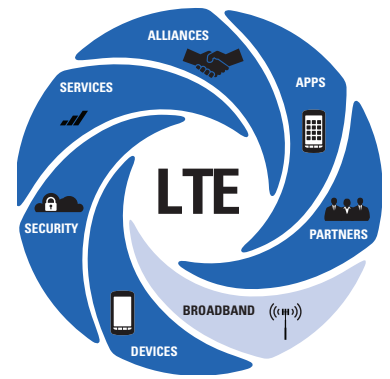
## LXN 6000 LTE INFRASTRUCTURE

Designed for portable, semi-permanent or fixed installations, LXN 6000 LTE Infrastructure is the flexible solution you need to establish coverage and capacity where and when you need it. Quickly and easily create ad-hoc, private networks, augment existing networks and add new levels of system resiliency. Be ready for special events, man-made or natural disasters, remote area operations and improve business continuity and disaster recovery capabilities.

**A FLEXIBLE LTE PORTABLE ECOSYSTEM WITH FAST AND EASY SETUP ENSURES CONTINUOUS OPERATIONS NO MATTER THE SITUATION**



# PUBLIC SAFETY LTE BROADBAND



## LTE PRIORITY MANAGER AND PREEMPTION DELIVER THE BEST QUALITY OF SERVICE FOR THE BEST POSSIBLE OUTCOMES

True LTE prioritization and preemption requires second by second dynamic granularity at the application, user, incident and agency levels coupled with manual control when overrides are necessary. You have the advantage of full network control with Priority Manager and Preemption solutions from Motorola Solutions.

## EVERY SITUATION IS DIFFERENT.

PRIORITIZE CRITICAL USERS • DEPRIORITIZE NONESSENTIAL COMMUNICATIONS • PREEMPT WHEN NECESSARY



ASSIGNED AUTOMATICALLY  
BASED ON AGENCY, ROLE,  
APPLICATION AND CAD  
INFORMATION



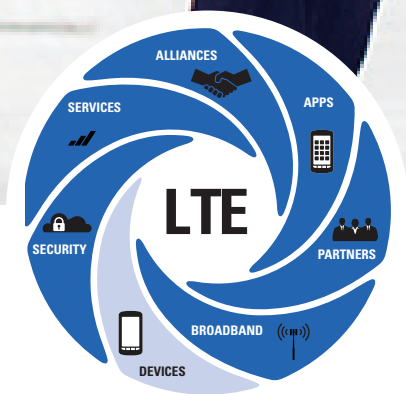
MANUALLY ADJUSTED  
FROM THE PRIORITY  
MANAGER APPLICATION



TRIGGERED BY  
USER EMERGENCY OR  
IMMINENT PERIL

ADJUST LTE APPLICATION AND USER PRIORITY IN REAL-TIME  
FOR BETTER DECISIONS AND IMPROVED SAFETY



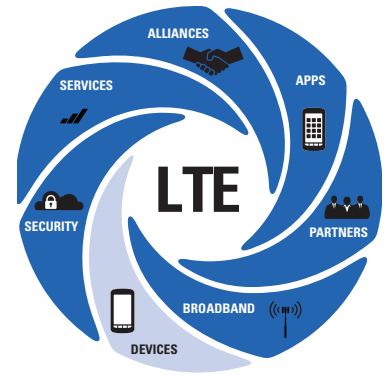


# PUBLIC SAFETY LTE USER DEVICES

## ACHIEVE MISSION-CRITICAL PERFORMANCE

Whether it is high-priority broadband data or streaming real-time video, an urgent dispatch update or interoperable push-to-talk, our portfolio of Public Safety LTE devices allows you to make use of advanced mobile broadband technology – today.

# PUBLIC SAFETY LTE USER DEVICES



Now your personnel can communicate and collaborate more efficiently, wherever they work. All while you protect their safety and enhance their productivity. Our next generation communication solutions are vital for protecting teams. Send vital information, support routine activities and stay connected with personnel. Expand communications to broadband devices such as our LEX L10 Mission Critical LTE Handheld, APX 7000L Multiband Radio with LTE and VML750 LTE Vehicle Modem. These smart, ruggedized solutions are purpose-built to deliver high performance and rich data capabilities on both Commercial and Public Safety LTE networks between remote locations.

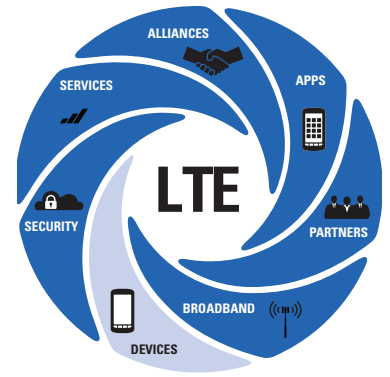
## THE ART OF MISSION CRITICAL DESIGN

LEX L10 Mission Critical LTE Handheld delivers an exceptional combination of rugged hardware, powerful software and broadband connectivity.

- 2MP Front-facing Camera
- 3 Integrated Microphones
- Textured PTT Button
- Up/Down Volume Buttons
- 4.7" Capacitive Touch Screen
- Dual 1W Front-Facing Speakers
- Rear 8MP Camera
- Mission Critical Wireless Bluetooth
- Removable Battery Cover
- No-slip Grip Texture
- Charger Docking Port
- Micro USB Port
- Recessed Power/Mode Button
- 3.5 mm Headphone Jack



# PUBLIC SAFETY LTE USER DEVICES



## LEX L10 MISSION CRITICAL HANDHELD

LEX L10 can operate in covert mode and can be securely touch-paired with Motorola APX™ Project 25 (P25) radios via Mission Critical Bluetooth® in order to remotely control the radio's zones, channels, volume, emergency and more.



## VML750 LTE VEHICLE MODEM

VML750 LTE Vehicle Modem harnesses the power of LTE with the priority, control and security required by public safety and turns vehicles into mobile Wi-Fi hotspots by connecting up to 32 clients to provide high speed data where it's needed most.



## APX 7000L MULTIBAND RADIO WITH LTE

With data and voice available simultaneously, APX 7000L is a sleek and rugged device designed to give mission critical operations secure, instant information sharing capabilities and uninterrupted voice connectivity.

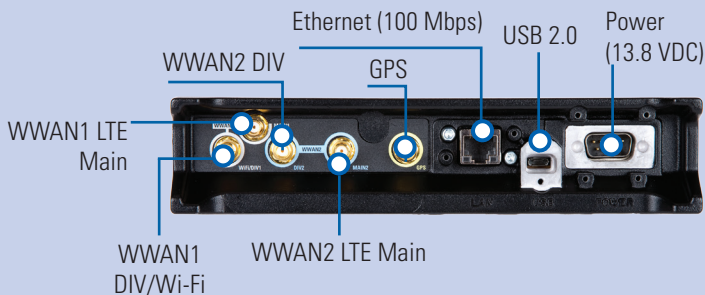
\*PRODUCTS NOT SHOWN TO SCALE

## TAKE HIGH SPEED PUBLIC SAFETY LTE ON THE ROAD

With LTE, WiFi and GPS, and rated to withstand heat, cold, rain, humidity, dust and vibration, VML750 turns vehicles into a secure zone of information access and sharing.

## MISSION CRITICAL VOICE MEETS BROADBAND DATA

Experience the uncompromising voice connectivity of Land Mobile Radio and the unrivaled data capabilities of LTE delivered on the rugged, secure and interoperable APX Portable Radio you trust.



LTE Module

Large Top Display

Wide knobs  
And controls

Multiband  
Operation

Expansion Slot

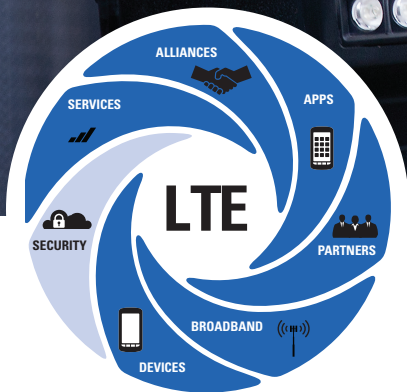
2 Mics  
2 Speakers

Large Color  
Display

Enlarged  
Keypad





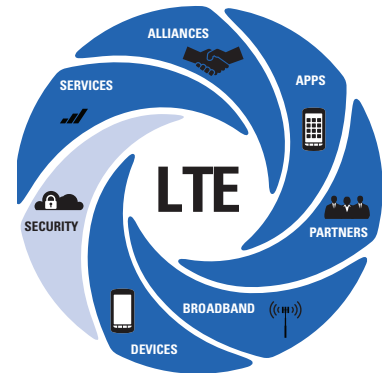


# PUBLIC SAFETY LTE SECURITY

## STAY AHEAD OF THREATS WITH ONGOING SECURITY MANAGEMENT

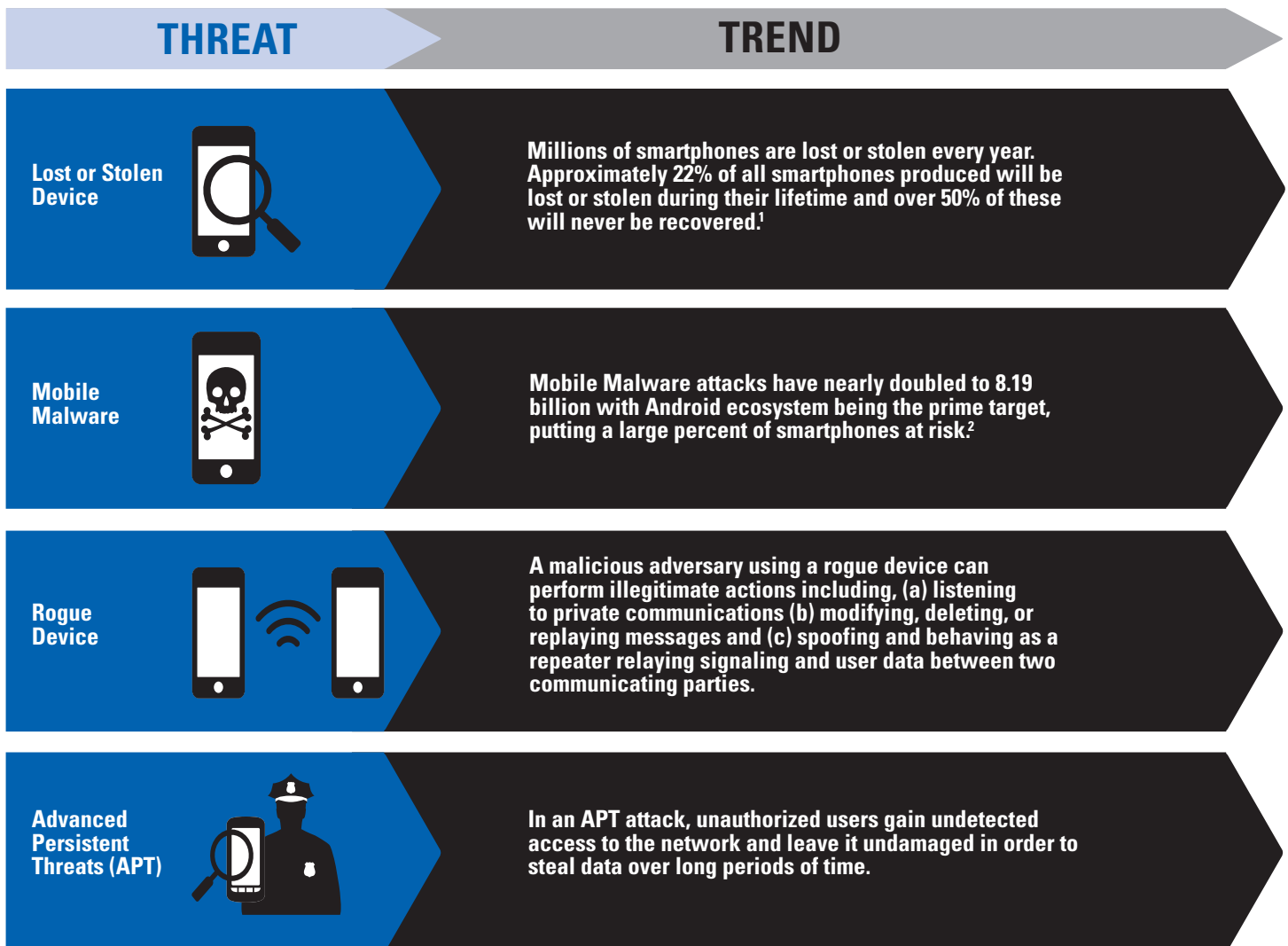
Your ability to retain and ensure high assurance security across your devices, applications, and networks depends on your ability to effectively manage it. Our secure management ecosystem helps you effectively manage and maintain security across your entire operation.

# PUBLIC SAFETY LTE SECURITY



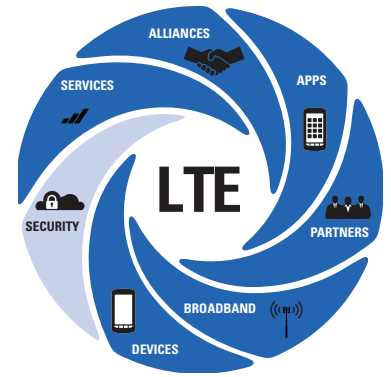
## THE CONSTANTLY EVOLVING LANDSCAPE OF THREATS

Today's broadband world is a continuously evolving landscape, where anywhere across your operations; from your mobile devices to your network infrastructure you face increasing cyberthreats. Attackers today are more pervasive, persistent, and proficient at evading and disrupting your operations. Cybercrime and assaults within your operations are only going to increase. Simply planning for accidental breaches and compromises is no longer enough. You need to plan for and expect hostile and proactive attacks against your network. And you need to be thinking ahead of the criminals and have the proper management capabilities built in so you can move from a react and respond to predict and prevent.





# PUBLIC SAFETY LTE SECURITY



## CERTIFICATE MANAGEMENT SOLUTION

Simply and securely manage the complete digital certificate lifecycle with Certificate Management Solution (CMS) products and processes. Monitor, manage and protect all of your deployed certificates via the CMS web based portal including defining the PKI hierarchy, issuing certificates, and revoking certificates in case of a compromise device.

## CRYPTR MICRO

Ensure your sensitive voice and data communications are protected from the evolving threats of a mobile device environment with a hardware based security module. CRYPTR micro is a FIPS-140-2 Level 3 validated hardware security module that securely manages, processes and stores encryption keys and authentication certificates. The microSD™ form factor provides tamper evident protection of your encryption keys and authentication certificates while performing cryptographic services like AES 256 encryption. With CRYPTR micro you have the highest levels of assurance without sacrificing the size, weight, or power of the device.

## KEY MANAGEMENT FACILITY

Remove the inherent complexity out of administrating and managing encryption keys with Key Management Facility (KMF). Keep your voice and data communications secure with encryption keys that update over-the-air without the delays, inconvenience or administrative costs of having users bring their devices into the shop for manual rekeying. Easily and quickly manage encrypted interoperable communications from a scalable, single centralized platform.

## MOBILE VIRTUAL PRIVATE NETWORK MVPN

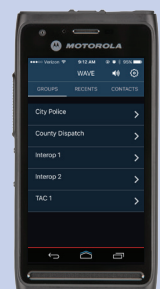
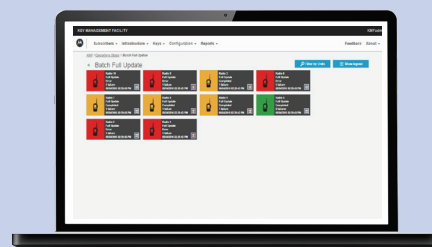
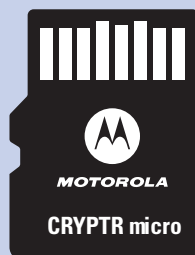
Protect your sensitive data in transit with a virtual private network (VPN) designed to work for public safety LTE systems. The Mobile Virtual Private Network (MVPN) establishes a secure connection via end-to-end encryption between end users devices and the enterprise network, significantly reducing the threat of eavesdropping. Built off of IPsec and MOBIKE standards, MVPN ensures a continuous connection for your applications while you move across the network, ultimately saving time and increasing your productivity.

### CERTIFICATE MANAGEMENT SOLUTION

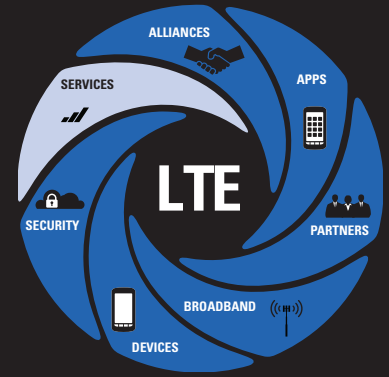
### CRYPTR MICRO

### KEY MANAGEMENT FACILITY

### MOBILE VIRTUAL PRIVATE NETWORK



# PUBLIC SAFETY LTE SERVICES



## ACHIEVE YOUR PS LTE GOALS

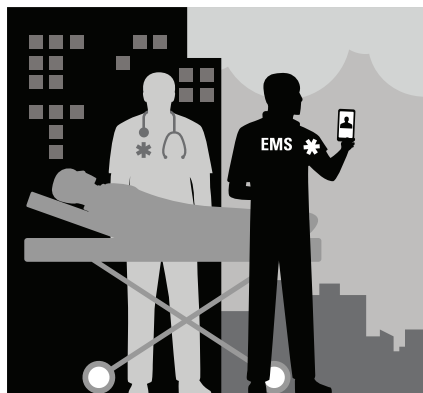
Optimize system and equipment uptime, manage changing technology and network complexities and plan for implementation and maintenance with our comprehensive suite of services. Understanding the complexities involved in system performance to avoid potential problems is vital to ensure safety and productivity are never at risk. System requirements never remain static over extended periods – making it imperative that your system can adapt over time.

From financing, integration, security, deployment and day-to-day operations, to the design and construction of state-of-the-art facilities, rely on Motorola Solutions to help you achieve your PS LTE goals with the right level of services you need. As the global leader in mission-critical communications, we provide expert engineers and network specialists dedicated to supporting and managing the ever-changing complexities you face, so you can focus on what matters most – your mission.

# PUBLIC SAFETY LTE ECOSYSTEM

A complete PS LTE ecosystem of applications, devices, networks and services connects people to information and to each other for better decisions and new levels of safety and efficiency.

## HOSPITAL VIDEO CALL



## SPORTING AND OTHER PLANNED EVENTS



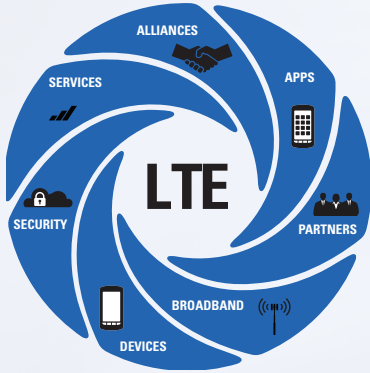
## STRUCTURE FIRE



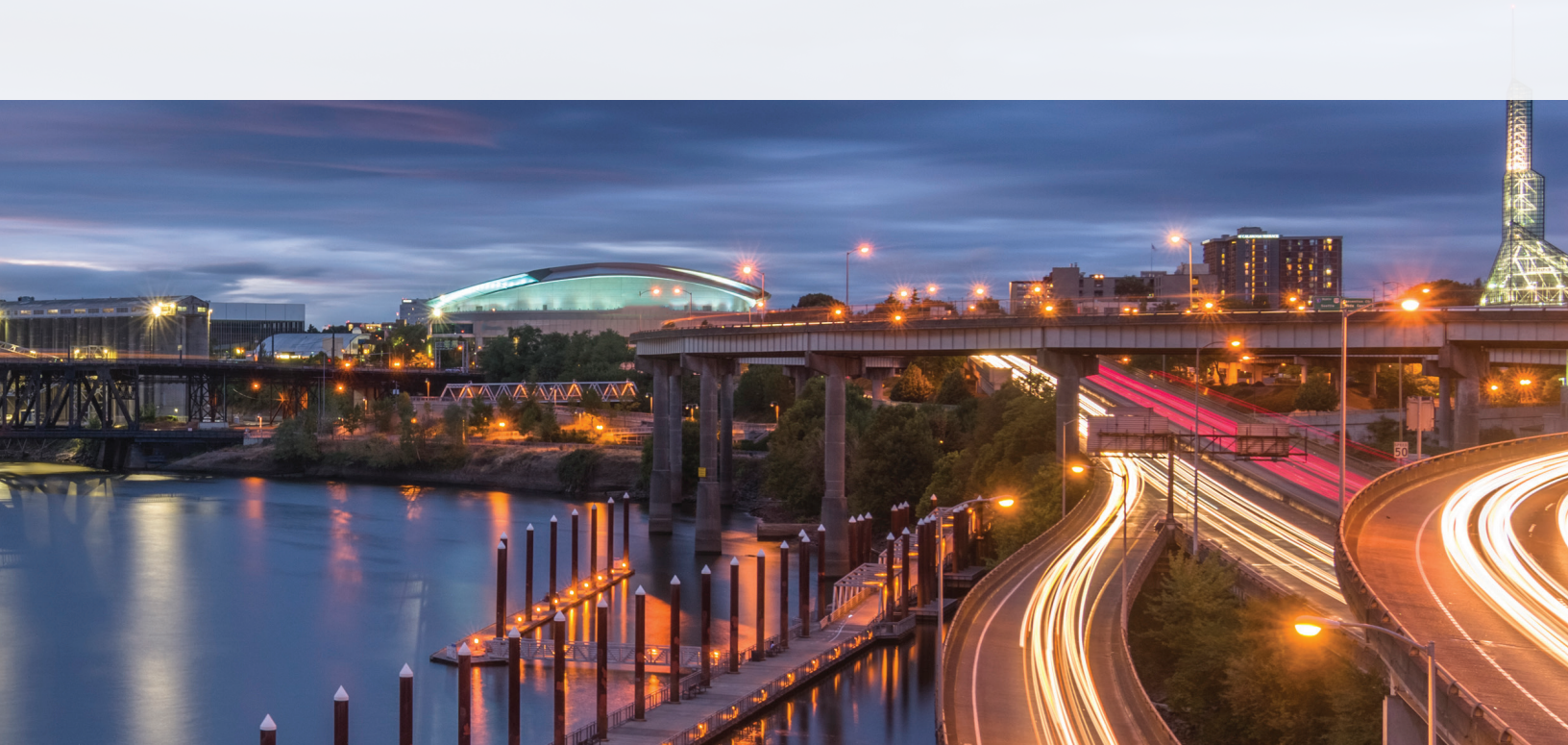
## MULTI AGENCY RESPONSE







**PUBLIC SAFETY LTE NETWORKS** are being introduced around the world to provide government, public safety and other critical users with dedicated, secure, high speed broadband data access. In a world that becomes more complex every passing second, where expectations are rising and personnel safety is an ever present concern, real-time information can make the difference between successful outcomes and disaster. Motorola Solutions comprehensive, end-to-end Public Safety LTE portfolio of applications, devices, networks and services work together to give you the advantage so you anticipate, prepare for and respond to situations like never before.



Sources:

1. "BYOD Security and Risk Considerations for Your Mobile Device Program" September 2011
2. 2015 Annual Threat Report, Dell Security

To get connected with Public Safety LTE, please contact your local Motorola representative or visit [www.motorolasolutions.com/publicsafetylte](http://www.motorolasolutions.com/publicsafetylte)

Motorola Solutions, Inc. 1301 E. Algonquin Road, Schaumburg, Illinois 60196 U.S.A. 800-367-2346 [motorolasolutions.com](http://motorolasolutions.com)

MOTOROLA, MOTO, MOTOROLA SOLUTIONS and the Stylized M Logo are trademarks or registered trademarks of Motorola Trademark Holdings, LLC and are used under license. All other trademarks are the property of their respective owners. © 2016 Motorola Solutions, Inc. All rights reserved. 08-2016